

CASE STUDY

Mail-in data collection service for MX at Diamond

Fragment-based and structure-based drug discovery programmes put a strong emphasis on frequent routine macromolecular crystallography data collection from numerous samples. Other types of projects may only need occasional data collection on a few samples or researchers may need to run an experiment they have not done before.



The Challenge

Synchrotron visits mean not only time dedicated to collecting data but also time spent in travelling to the facility by at least one but often more research scientists. If synchrotron visits are frequent or the number of samples is low, this could affect the efficiency of the company workload. In both situations, a busy team can often benefit from access to an extra pair of hands.



The Solution

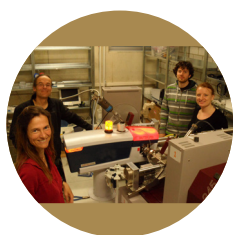
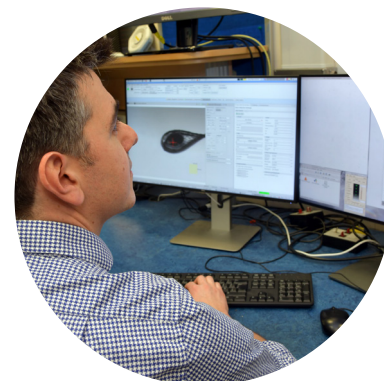
The Industrial Liaison team at Diamond brings an efficient solution to this problem – the mail-in MX data collection service for industrial customers. After sample shipment is arranged and instructions for data collection are provided, the samples are handled, data collected, and processed via automated software pipelines by the highly qualified and experienced staff from the Diamond Industrial Liaison team.



Samples are then shipped back together with a report and, if requested, data backup. The data collection results are also available immediately online via the ISPyB database.

The Benefits

With time scheduled throughout the year for mail-in service data collection, regular customers can have confidence that their data will be collected in a timely fashion. Occasional sample shipments can also be handled with ease, with the team being able to take advantage of any short notice availability of beamtime. With sample arrival to data departure intervals as short as 24 hours, the MX mail-in data collection service can be a valuable addition to any industrial crystallographer's toolbox.



“When we give our precious crystals away for synchrotron data collection we expect that the highest standards in data collection and communication of results are met. The team at Diamond does exactly that. We know at any time where our crystals are, when data collections are scheduled, and receive instant updates on progress and results. We know we can always get in touch and the team is eager to help with all of our particular requests. It has been extremely important for us to know, that they will do all they can to provide us with access to data collection time even out of our regularly allocated slots to help us serve our own clients in the best possible way.”

Dr Ingo Korndorfer, Crelux



For further information

Diamond Industrial Liaison Team

+44 1235 778797

industry@diamond.ac.uk

diamond.ac.uk/industry

@DiamondILO

CS-DDS-CRX-018-2