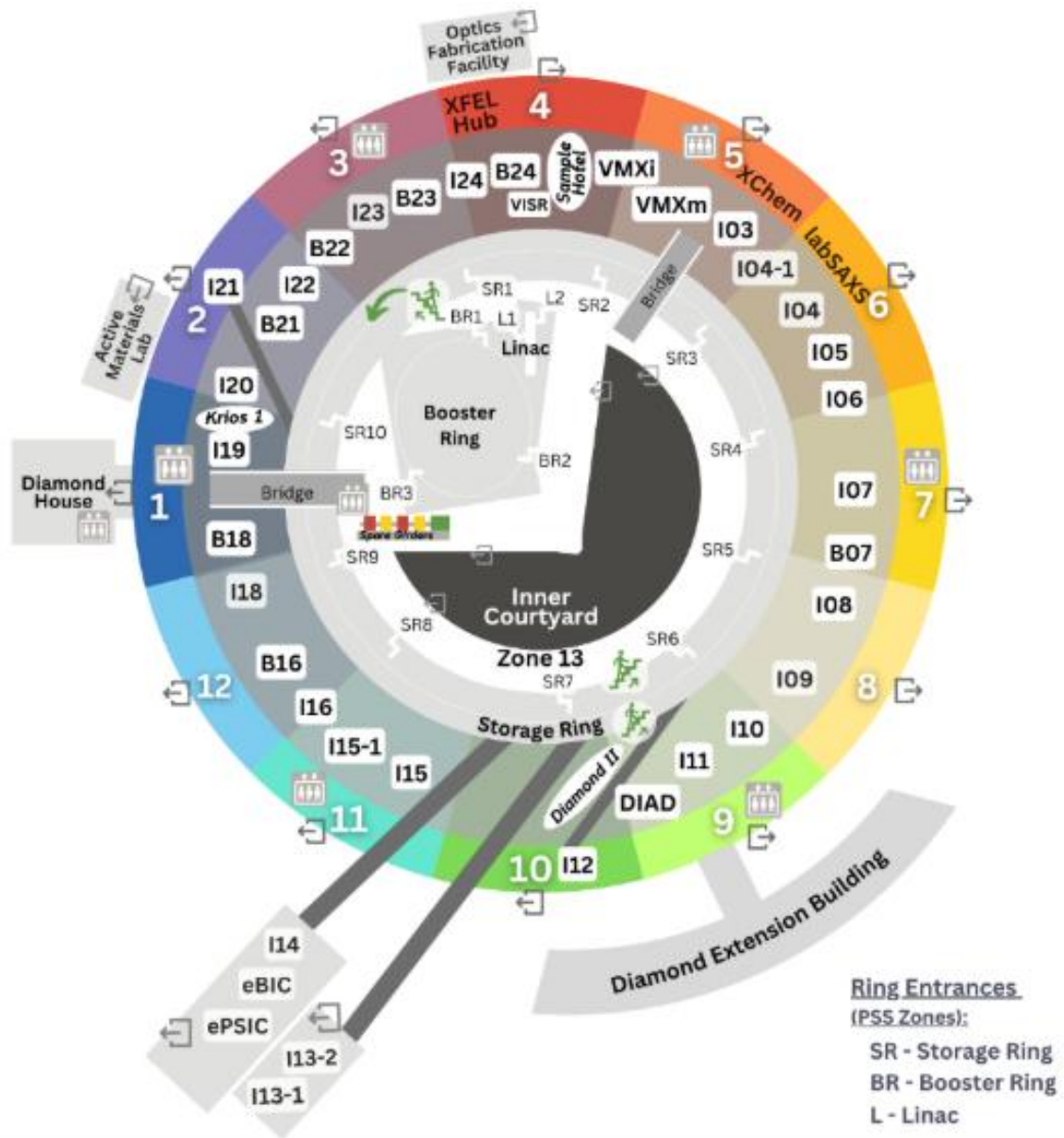


Welcome to Beamline B21

Location

The beamline is located at the ground floor of the synchrotron building in Zone 02.



Parking

Parking is available anywhere around the ring but a designated space close to the entrance of Zone 03 can be prebooked if needed. Please let your beamline local contact know if you require this space reserved for you, as well as your intended dates on site no later than 15 days before your first scheduled day with us.

3b is a standard space and 3a has driver's side access space denoted by the hatched lines.

There is a dropped curb from the road and a straight paved pathway to the door.



Access to the beamline

There are several possible ways to access to the beamline.

A) Zone 3 entrance door (ground floor)

The Zone 03 entrance door is located close to the beamline.

You will need to present your valid badge to the sensor to release the door. This will cause the light to flash on the card reader and a beeping sound. The door will become locked if not opened six seconds after presenting your access card at the reader, which is signified by the card reader no longer beeping or flashing.

The door is 76 cm wide and a pull to open door which can be heavy to open with one hand.



Once through the door, you will find stairs and a lift to the first floor. An accessible toilet is located to your left. To access to the experimental ring, there is another power assisted door straight ahead (90 cm wide) which can be opened by pressing the power assist button. Turn right to find B21.

You can also enter the synchrotron through Zone 02 but if you do so, please be aware that you will need to duck under a low beam to get to B21.



Low obstruction in Zone 2

B) Entrance by Diamond House building (first floor)

Entry into the synchrotron building can also be made via the covered bridge between Diamond House and the synchrotron building.

Once through the three sets of doors, you should turn left and proceed along the walkway to Zone 03. Once through the door, you will find stairs and a lift to the ground floor, where the beamlines are located. At the bottom of the stairs/lift, a last set of doors with power assisted button give access to the experimental hall floor. You will need to make your way to Zone 02 by turning right.



C) Exit the Synchrotron building

To exit outside by any door, you need your access card. Once in the proximity, the Zone doors should be able to detect the presence of your security pass and the green light on the indicator panel will be shown. You can also tap your pass on the panel. On some doors you may need to push a green dome button. Push the door to exit.

User's time at the beamline

Entry to B21 is via the blue door which is 86 cm wide. This brings you into the Beamline Control Room. This is a large room with good access. It has workstations and regular office chairs both of which can be adjusted for height.

There is also a sofa and whiteboard available. Kitchen facilities are located upstairs in the Zone 03. Snacks and drinks are permitted in the Control Room.

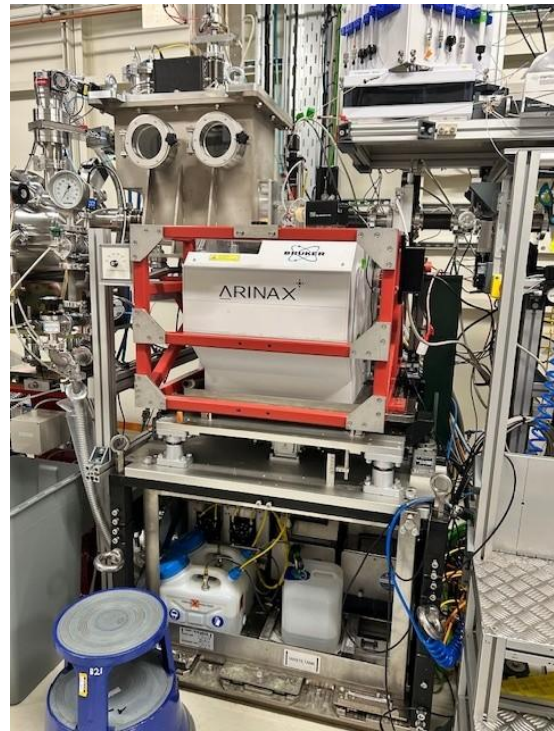


The experimental hutch

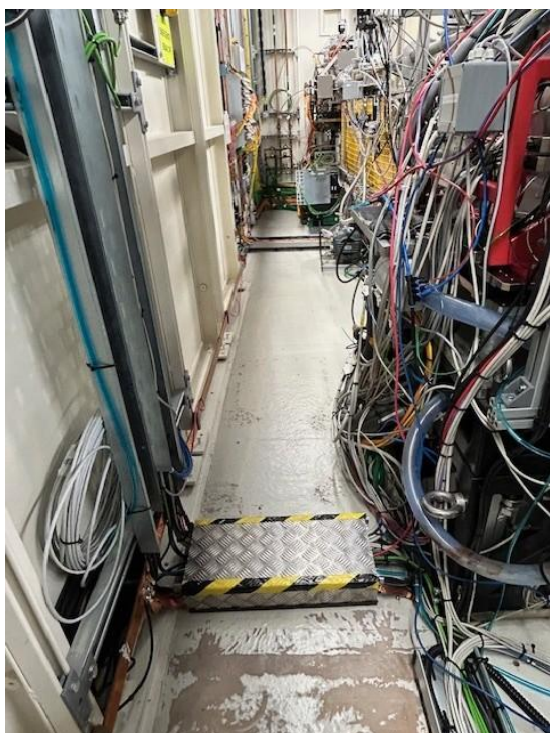
The experimental hutch is a radiation hutch and has a small lip on the door. Users will usually load their own samples and make adjustments.



There are two sample loading stations which users may need to access. The first, the Arinax, requires loading at head height (approximately 143 cm). The second requires users to ascend three steps. There is no rail.



The experimental hutch has a safety search protocol in place, and it is advised that users with limited mobility will not be suitable candidates to carry out this search. The search area is very narrow with limited access. The narrowest point behind the instrument is approximately 62 cm, and the narrowest floor clearance in front of the instrument is approximately 58 cm. Shown below.



Emergency exit

There are emergency cut-off switches located both inside and outside the hutch. Although this is unlikely to be required, please be aware that the doors are extremely heavy to push open.

Lab 12

Users may access this laboratory for sample preparation. It is a large room with standard laboratory equipment. Benches are approximately 93cm in height with adjustable chairs.



Please note that due to lead and concrete shielding, there are many areas in Diamond that have poor mobile network coverage. If you have difficulties using desk phones, or reduced mobility that you feel may hinder your ability make a call from a desk phone in an emergency, please let us know and we can either provide a wi-fi phone or help you setup your own device to make calls over our network connection, if this is possible.